



Lingfield House, London, W4 4JR

£799,950

WHITMAN & CO.

SALES · LETTINGS · COMMERCIAL

- 1262 sqft Lateral apartment
- Kitchen/breakfast room with balcony
- Luxury bathroom and separate guest cloakroom
- 20' Reception room with balcony
- Two large double bedrooms with fitted wardrobes
- Moments from shop, cafes and restaurants

Tenure - Leasehold with share of freehold
 Lease length - 172 Years
 Service Charge - £7381.29
 Local Authority - Hounslow
 Council Tax - Band E

THE PROPERTY

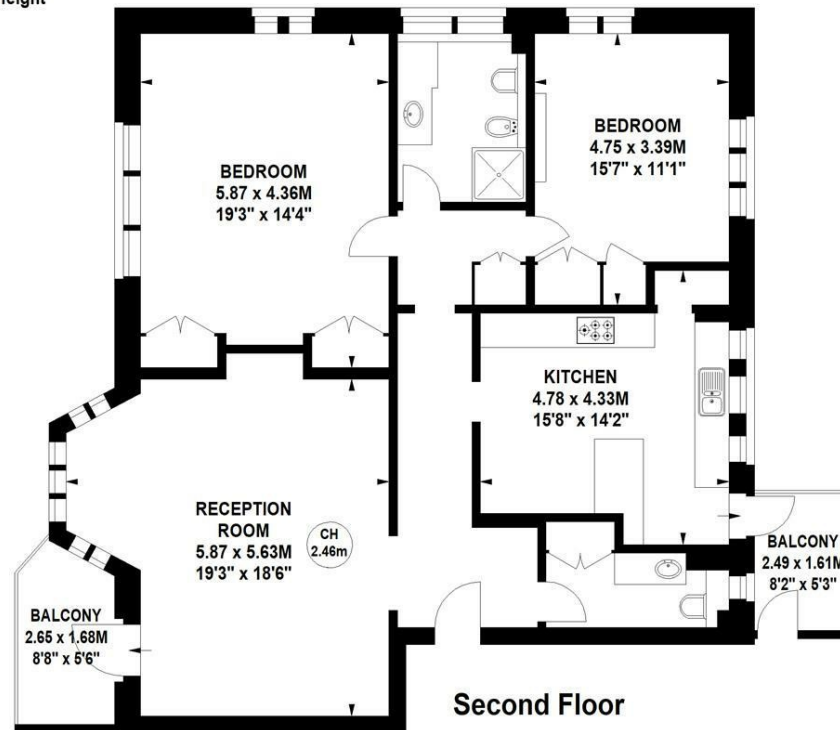
An immaculately presented, light and exceptionally spacious apartment offering 1262 sqft of accommodation in this central Chiswick location. The accommodation comprises a 20' reception room with balcony, 14' kitchen/breakfast room, two large double bedrooms with fitted wardrobes, luxury bathroom, cloakroom, share in the freehold, off-street parking, communal gardens, porter. Situated just off Turnham Green within a few minutes walk of Chiswick High Road's shops, cafes and restaurants. Transport links include Chiswick Park stations, local bus routes and the A4/M4 for routes in and out of London.

Lingfield House, Heathfield Terrace, W4

Approximate gross internal area
 117.24 sq m / 1262 sq ft



Key :
 CH - Ceiling Height



Not to scale, for guidance only and must not be relied upon as a statement of fact.
 All measurements and areas are approximate only

SITUATION



5-7 Turnham Green Terrace, Chiswick, London, W4 1RG
 Tel 020 8747 8300

E-mail sales@whitmanandco.com
 Website www.whitmanandco.com